

Engaging and Empowering the Commonwealth: Penn State Outreach in 2022

Prepared for the Board of Trustees
January 19, 2023

Justin W. Aglio, Ed.D.
Interim Vice President
for Outreach





We empower communities and individuals within the Commonwealth and beyond to become resilient, healthy, sustainable, and innovative.



Penn State Outreach will make a positive impact on society by engaging diverse audiences in the design and delivery of compelling content and meaningful, evidence-based programs. Through our work we are committed to being an inclusive and engaged University for Pennsylvania and beyond.

Outreach Units & Programs

Professional and Community Engagement

- Conferences and Institutes
- Justice and Safety Institute
- Musser Gap to Valleylands Project
- Osher Lifelong Learning Institute
- Penn State Center Philadelphia
- Penn State Center Pittsburgh
- Shaver's Creek Environmental Center

Nittany AI Alliance

Readiness Institute at Penn State

- K-12 Engagement Network

The Arboretum at Penn State

WPSU

- WPSU-FM
- WPSU-TV
- WPSU-Digital

Penn State Outreach Celebrates DEIB 2022

#WeAre Understanding

#WeAre Achieving

#WeAre Sharing

#WeAre Learning



Professional and Community Engagement

- Conferences and Institutes
- Justice and Safety Institute
- Musser Gap to Valleylands Project
- Osher Lifelong Learning Institute
- Penn State Center Philadelphia
- Penn State Center Pittsburgh
- Shaver's Creek Environmental Center
- Student Engagement Network

Pam Driftmier
Executive Director

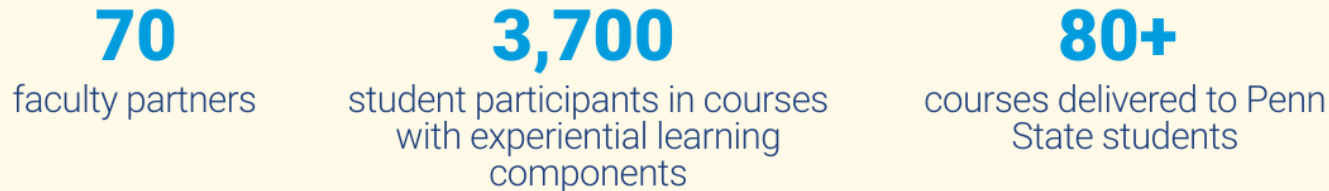


Conferences and Institutes

2022 noncredit educational programming



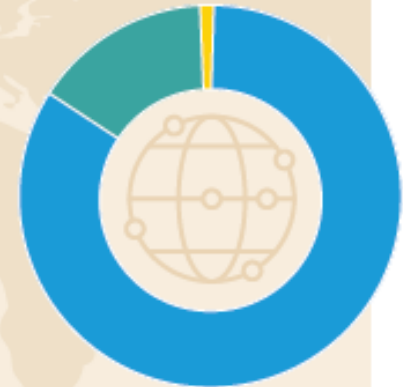
2022 credit educational programming



C&I partners with the College of Education and the Pennsylvania Training and Technical Assistance Network (PaTTAN) to deliver the annual **National Autism Conference**.

Since 1999, the conference has welcomed 38,000+ attendees from 47 states and 29 countries

ATTENDEE COMPOSITION



Justice and Safety Institute

JASI was formed in 1971 to meet the professional development needs of law enforcement and public safety professionals. Since then, hundreds of municipal, county, state, and federal police agencies have entrusted JASI to train thousands of law enforcement professionals.

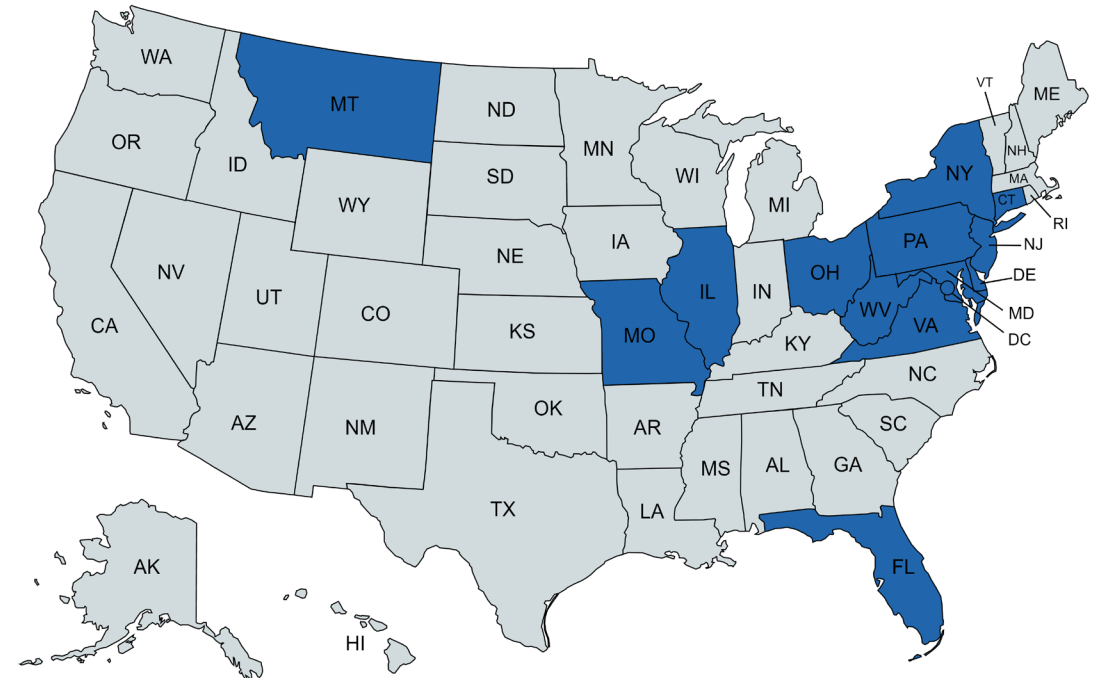
Today, under the leadership of director Steve Shelow, the JASI training portfolio includes the Pennsylvania Child Support Enforcement Training Institute (PACSETI), the Pennsylvania Sheriff and Deputy Sheriff Training Program, Criminal Justice Professional Training (CJPT), and the Constable Education Training Program.

The Criminal Justice Professional Training program reaches:

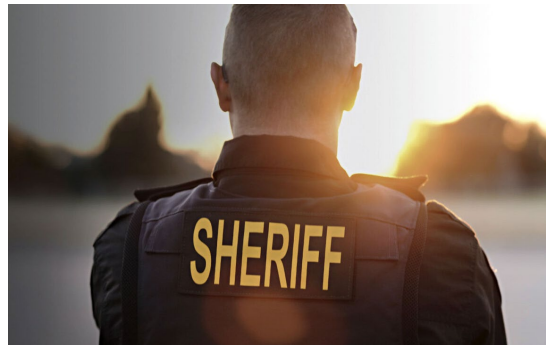
- All 67 counties in the Commonwealth of Pennsylvania
- 14 states and the District of Columbia

“ I have taken many classes, but this was by far the best I have ever taken in my life. The instructor was excellent! He truly cared about the students and material. ”

—Field Training Officer Student Feedback



Justice and Safety Institute



Above, left, participants in the PACSETI program; above, right, Marcha Reumel, assistant commissioner of the national police in Suriname.

Pennsylvania Child Support Enforcement Training Institute (PACSETI)

3,430

officers trained

8,318

sessions accessing the
PACSETI child support
program manual

100%

of PA counties
represented by officers
trained

PA Constable Education and Training Program

672

constables trained

37

PA counties represented by
constables trained

Criminal Justice Professional Training

37

training programs
held

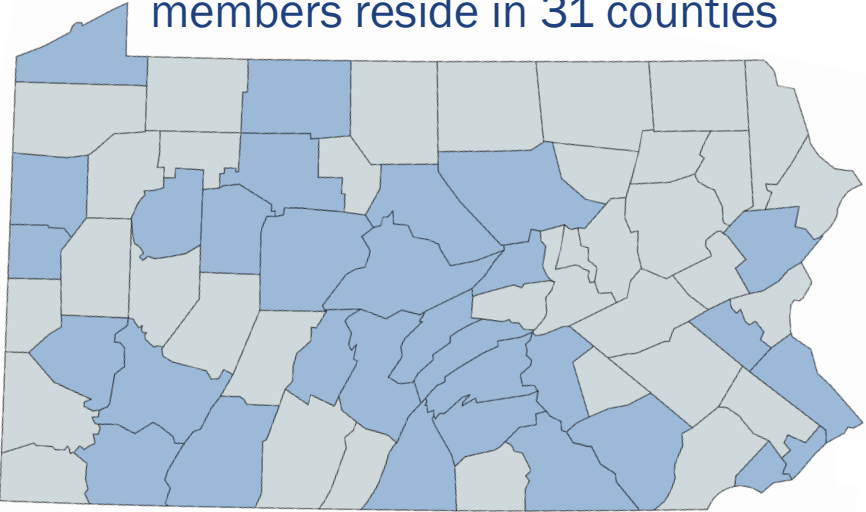
1,027

law enforcement
professionals trained

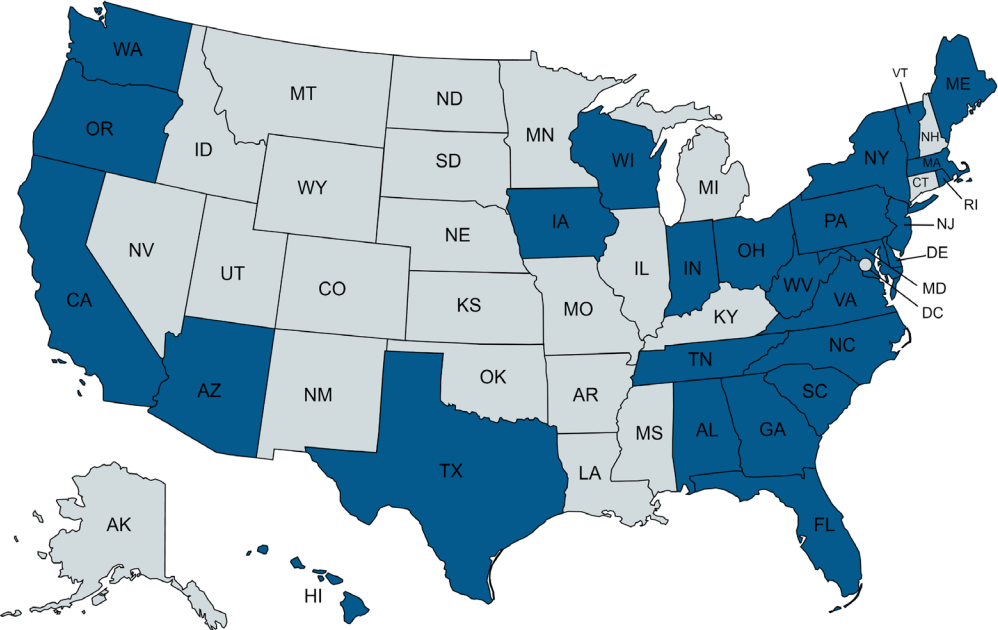
Osher Lifelong Learning Institute

Osher Lifelong Learning Institute (OLLI) is a membership-based organization with chapters in the State College and York areas, open to individuals aged 50 and better who want to further their knowledge, socialize, explore, and engage in a friendly and welcoming environment.

OLLI UP & OLLI York PA members reside in 31 counties



OLLI UP & OLLI York members reside in 27 states



Osher Lifelong Learning Institute

2022 membership and engagement

1,442

members (12-month average)

480

courses offered

81

social gatherings

291

member donors
(20%)

640

special interest
group participants

10,098

total course
enrollments

500

member volunteers
(35%)

“

I have not taken one OLLI course that I haven't enjoyed. The variety of courses offered each semester is terrific - there is always something for everyone! Thank you, OLLI at Penn State staff for your professional approach to lifelong learning! ”



Penn State Center Philadelphia

Penn State Center Philadelphia provides meaningful pathways for engagement between Penn State resources, faculty, and students and community members living in the Greater Philadelphia area. We listen to the needs of the city and leverage Penn State faculty expertise and student support resources to create solutions that will have lasting impact.

Penn State Center Philadelphia 2022 at-a-glance

55

Philadelphia-based
partner
organizations

6

community
partners received
assistance via
grants

\$378,500

received by
community
partners

10,000+

community
members
engaged

157

students engaged via
University Park,
Brandywine,
and Abington



Penn State Center Pittsburgh

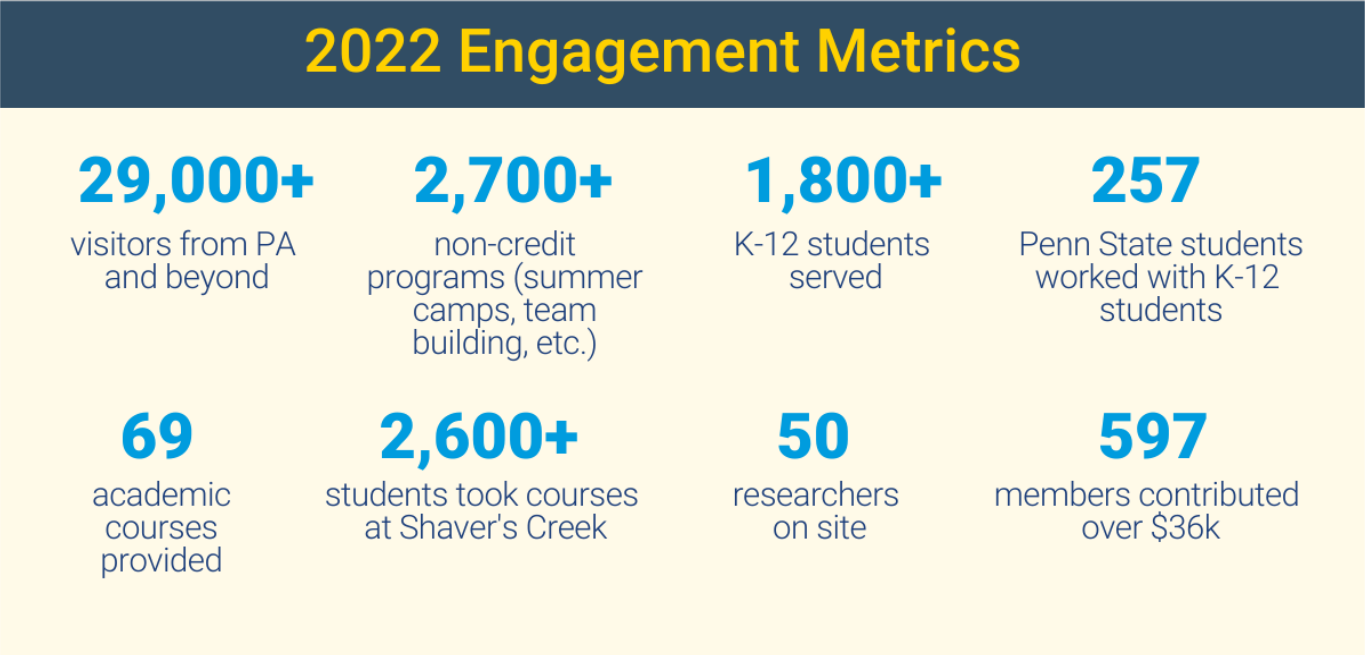
Penn State Center Pittsburgh connects the Pittsburgh region (the City and Allegheny County) with the University's faculty, staff, and students to support sustainable and equitable communities through research, local outreach, engaged scholarship, and community engagement and unique educational opportunities.

- City Semester Pittsburgh: Offers students and community partners opportunities to work together to make a positive impact in urban communities, by addressing urban sustainability and resiliency issues at the local level.
- National Green Infrastructure Certificate Program (NGICP): The 35-hour non-credit program is taught by Penn State Center Pittsburgh, in long-term collaboration with PWSA. 13 Programs/Projects that engaged:



Shaver's Creek Environmental Center

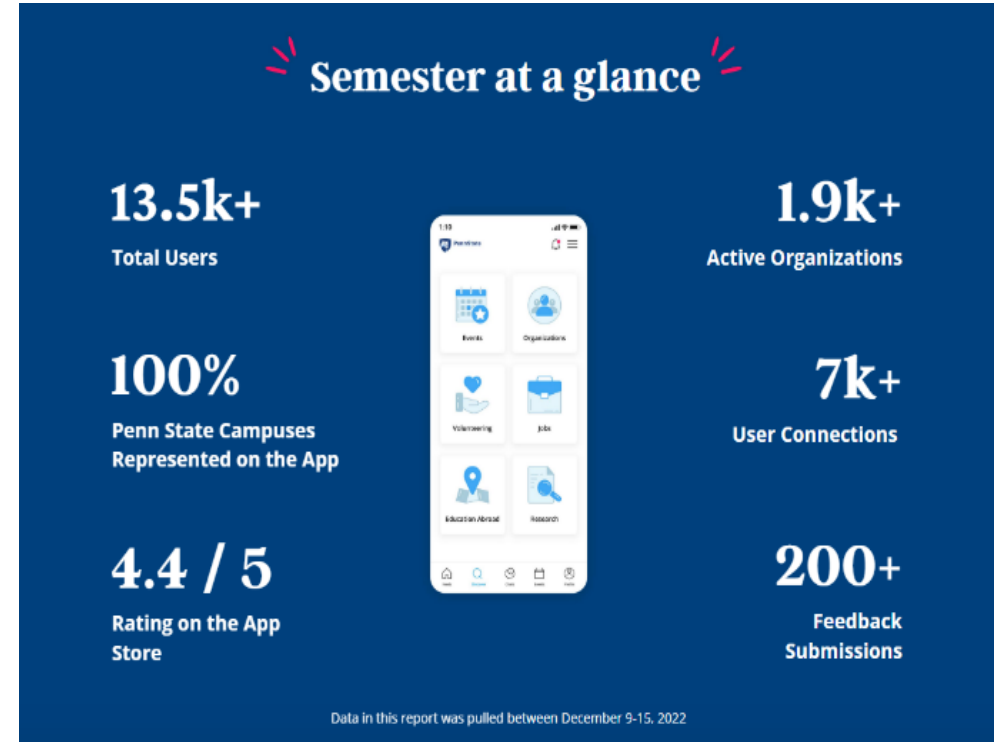
Shaver's Creek Environmental Center provides educational and recreational opportunities for families, schools, corporate groups, and Penn State students. Through quality programs, we teach, model, and provide the knowledge, values, skills, experiences, and dedication that enable individuals and communities to achieve and maintain harmony between humans and nature.



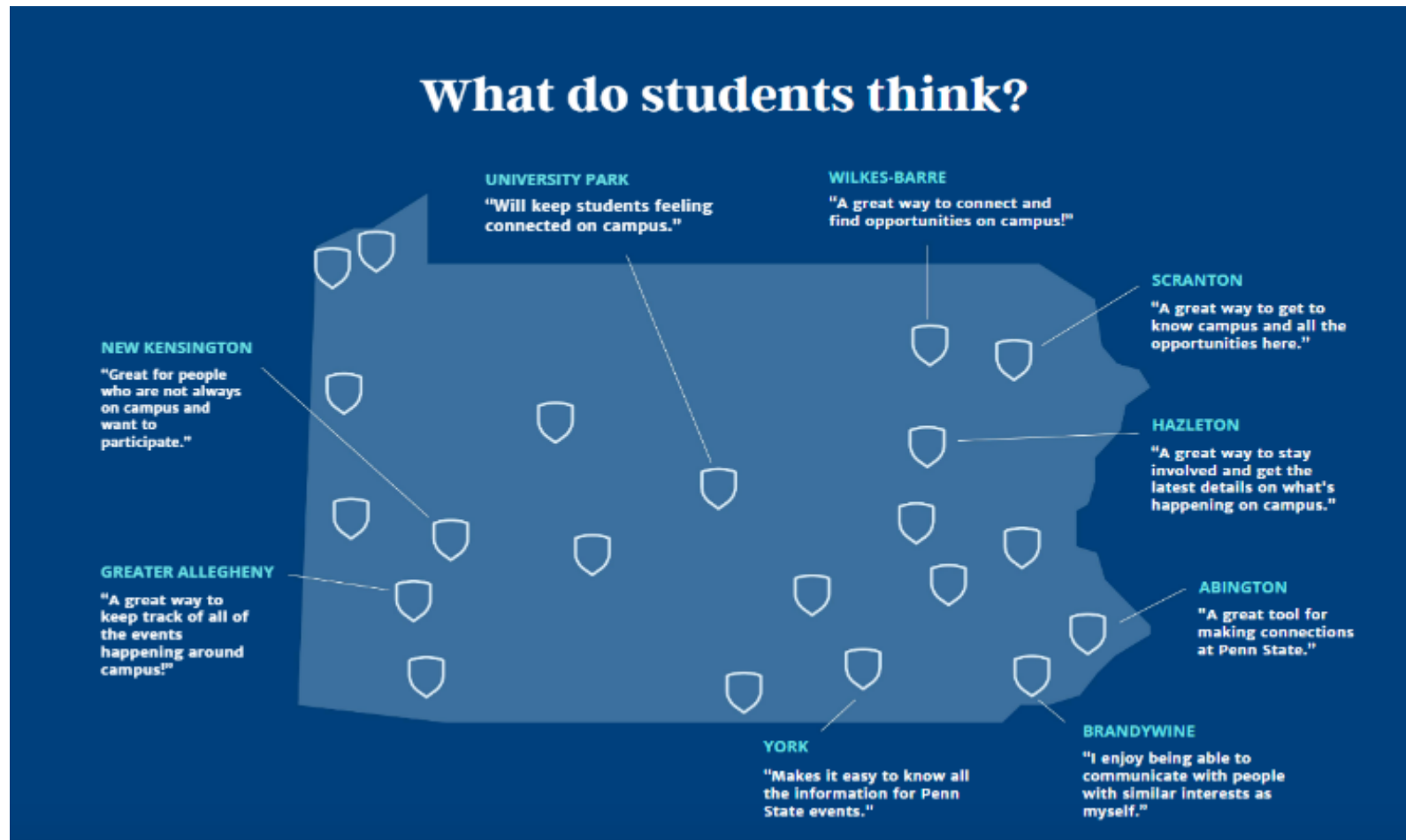
Student Engagement Network

Student Engagement App

To promote student engagement across Penn State's twenty-four campuses, SEN developed a comprehensive, University-wide tool known as the Engagement App (In collaboration with Navengage) which officially launched in **August 2022**. The purpose of the Engagement App is to provide all Penn State students, faculty and staff with a centralized, University-wide platform that connects them with the wide range of engagement experiences available to them at Penn State.



Student Engagement Network



USER QUOTE

"I look at [the app's events] weekly to see if there's anything I'm missing out on."

Penn State Student '23



Nittany AI Alliance

- Nittany AI Advance
- Nittany AI Challenge
- Nittany AI Connect
- Nittany AI Inspire
- Nittany AI Student Society

Daren Coudriet
Executive Director



Nittany AI Alliance

The Nittany AI Alliance, a Penn State Outreach initiative, creates programs that bring together students, faculty, staff, and industry leaders to address real-world problems through experiential learning projects using artificial intelligence-based solutions.



"The Nittany AI Alliance literally got me my career. The Alliance gave me an outlet to really prove my skills in a practical environment, which is really where I was able to excel at the University. Without the work that I did at the Alliance, without the opportunities that it provided me and students like me, I would not have had a résumé that would have gotten me in the door at Accenture." - Joel S.

"My involvement with the SmartOCR project has been the pinnacle of my education at Penn State. In every interview I've had, recruiters are astounded by the intangible business skills I've been able to develop and refine as a project lead with Nittany AI."

- Joshua F., Computer Science Student BS, MS



Readiness Institute at Penn State

- Readiness Institute
- K-12 Engagement Network

Justin W. Aglio, Ed.D.
Executive Director



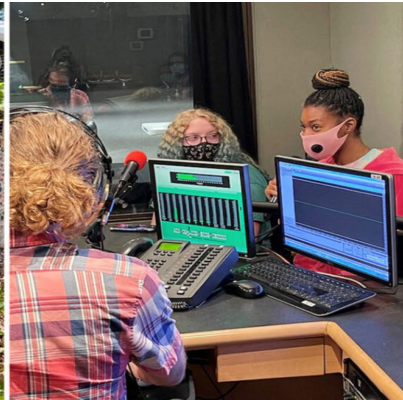
Hope Moonshot



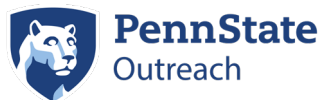


Readiness Institute

The Readiness Institute at Penn State enables education, industry, and community partners to coordinate, collaborate, and create experiences for learners to achieve community and future readiness – regardless of their zip code, race, ethnicity, gender, sexual identity, and ability level.



A BOOTCAMP **MARK CUBAN**
FOUNDATION




Readiness
Institute
Podcast



K-12 Engagement Network

The K-12 Engagement Network seeks to broaden the reach and awareness of the Penn State opportunities and resources for K-12 students, educators, administrators, and families by supporting and promoting University entities working in the K-12 space.



A promotional banner for a webinar. At the top left are logos for PennState Outreach and K12 Engagement Network. At the top right are logos for PennState College of Education and a play button icon. The main text reads "Education for the Future: K-12 STEM Landscape & PA Science Standards". Below this is the date and time: "October 27 | 12:00 - 1:00 p.m. via Zoom". A large play button icon is centered. To the left, under "Guest Speakers", are "Demetrius Roberts, PDE Consultant" and "Nightington, PSU CSATS". To the right, under "Register at", is the URL "bit.ly/K12StemWebinar". At the bottom, there is a row of five small images: a girl with a STEM sign, a boy with a lightbulb, a girl with a rocket, a hand pointing, and a woman in a video call window.



The Arboretum at Penn State

Casey Sclar
H.O. Smith
Endowed Director



The Arboretum at Penn State

The mission of the Arboretum is to engage the academic strengths of the University in promoting scholarship and education about plants and their history and importance on earth.



2022 Pumpkin Festival by the Numbers

≈**20,000** visitors

880 free pumpkins distributed to the community

640 jack-o'-lanterns returned and displayed at the festival (*up 28% from 2021*)

250 community and student volunteers

18 counties reached through the festival's marketing

11 student organizations involved





WPSU

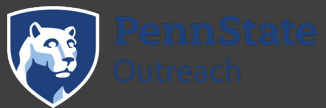
- WPSU-TV
- WPSU-FM
- WPSU-Digital

Isabel Reinert
Executive Director





WPSU



Production

- Speaking Grief: To date, the @wpsugrief account has 25,900 followers on Instagram; this ability to reach an existing network of followers has enhanced the impact of Speaking Grief’s monthly webinars, which ran April-December 2022 and averaged 214 registrants. The webinars are archived and shared via the Speaking Grief Facebook page and the website (speakinggrief.org/webinars). These videos continue to serve as a valuable learning resource with more than 1,600 views across all webinar videos.

- Speaking Grief testimonials

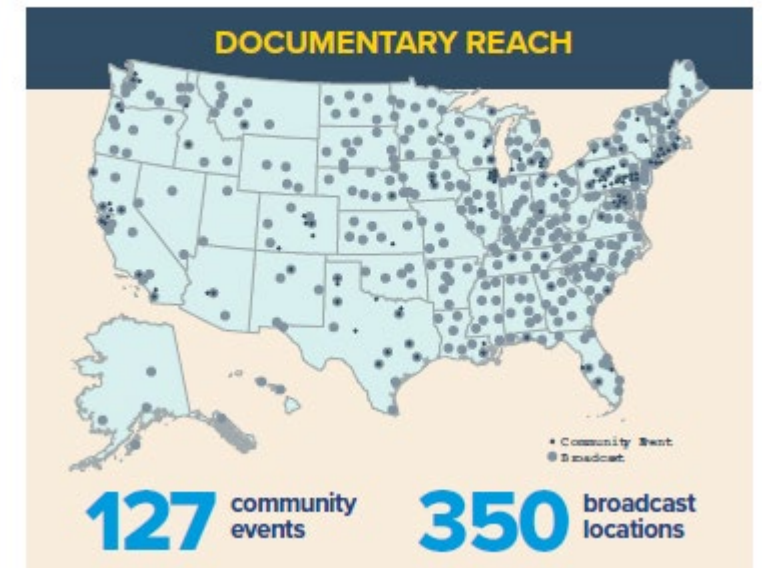
“Thank you for providing these resources around grief and loss. If there's one thing that is essential for the griever, it's to know they are not alone. You're doing a tremendous job letting people know they are not alone and offering support. What a fabulous documentary and a fabulous panel on this webinar!”

“I’m grateful that you keep the conversation about grief continuing through these monthly webinars. They provide current, truthful information about different aspects of grief that I am not hearing elsewhere.”

- Digital Initiative
More than 15,000 views on YouTube

Number of people reached by the initiative since January 2020:

> 161,201,925 (broadcast) > 458,001 (website)
> 28,592 (social media) > 589 (webinars)



Takeaways



World-Class Education

With the resources of twenty-four campuses, plus an online World Campus, Penn State's educational model provides opportunities to build your future and your career.



Interdisciplinary Research

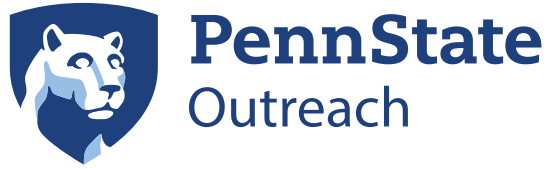
Faculty members, graduate researchers, and undergraduate students collaborate to conduct expert research on topics ranging from acoustics to zombie ants.



Global Service and Impact

Penn State students, faculty, staff, and alumni are creating positive impact in their communities—in Pennsylvania and beyond.

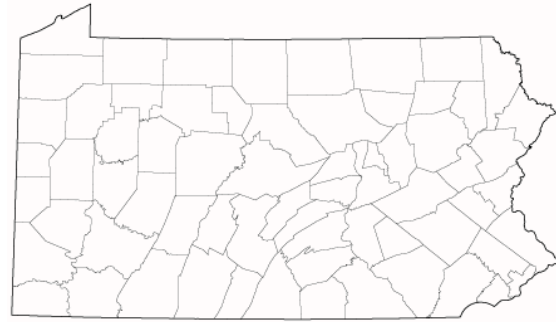




Takeaways



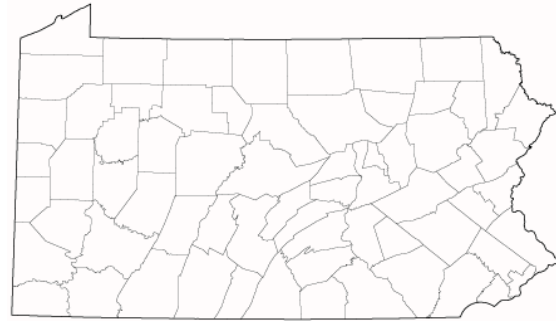
PennState
Outreach



Takeaways



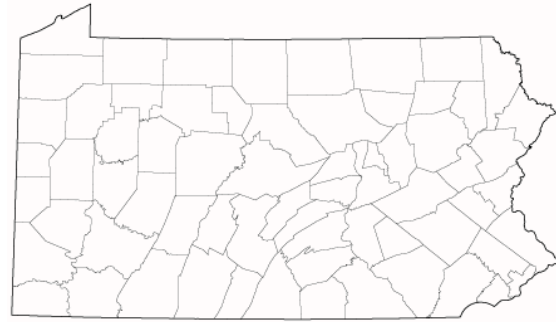
PennState
Outreach



Takeaways



PennState
Outreach



Takeaways

Welcome to Larry Terry, Ph.D.

Larry D. Terry II will step in as vice president for Penn State Outreach in January of 2023. Prior to his position at Penn State, Terry served as the executive director for the Weldon Cooper Center for Public Service at the University of Virginia (UVA) and professor at the Batten School of Public Policy.

During his time as executive director, Terry led efforts focused on making a difference in the commonwealth of Virginia through public impact research and leadership development, managing a team of more than 50 and a \$7.5 million annual budget across five different units — the Center for Survey Research, the Demographics Research Group, the Center for Economic & Policy Studies, the Virginia Institute of Government, and the Sorensen Institute for Political Leadership.

Terry also currently serves as the president of the Consortium of University Public Service Organizations (CUPSO), which supports university-based public service institutes in their efforts to assist state and local governments by facilitating networking, information exchange, and collaboration among its member institutions.

Terry's research interests include incarceration and police-community relations in the United States and his work has been published in several professional and academic journals including *Leadership and Management: Emerging, Contemporary, and Unorthodox Perspectives*; *Journal of Leadership and Management*; *International Journal of Public Administration*; *Public Administration Review*; and more. He is currently authoring *The Hope for Humanization: Values, Politics and the Community Imperative for America's Rebirth*.

Terry earned his PhD in Public Affairs from the University of Texas at Dallas, a Master's in Public Administration from San Diego State University, and a BA in Black Studies from the University of California at Santa Barbara.



PennState
Outreach



PennState
Outreach

Justin W. Aglio, Ed.D.

Justinaglio@psu.edu

Interim Vice President for Outreach and Executive Director of the Readiness Institute

Thank you